



ASPIRE

RESPECT

CONTRIBUTE



BEECHWORTH SECONDARY COLLEGE INFORMATION HANDBOOK 2023/2024



<http://www.bworthsc.vic.edu.au>

<https://www.facebook.com/BeechworthSecondaryCollege/>

Phone contact: (03) 5728 1264





PRINCIPAL'S MESSAGE

Welcome to Beechworth Secondary College.

We are proud to lead this school through an exciting period of redevelopment and growth, in our facilities and in the learning programs we offer. The school values its strong connections to the people and history of this diverse community of Beechworth, Yackandandah, Stanley and the wider Indigo Valley. We are keen to acknowledge our history within the community.

At Beechworth Secondary College we have a strong focus on academic and personal success and wellbeing. We aim to engage our students and offer the support and extension they need. We believe in upholding the school values which challenge our learners to grow and to develop holistically. This will position your child for a successful pathway post secondary education.

We have adapted our work as educators effectively to respond to the changing educational environment. Our dedicated team of teachers and support staff are continually updating their skills and knowledge to respond to the needs of individual students. Whilst a strong academic focus is important, we also acknowledge that there is so much more that goes into a successful educational experience. We offer a rich array of extra-curricular activities that has something for everyone to find success and build the skills, knowledge and relationships which will support them throughout their life. Beechworth Secondary College continues to be responsive to the needs of the community we serve.



BOOK A SCHOOL TOUR

We welcome all interested families and community visitors to book a tour with our principal team to see our school program in action.

Please contact the office on (03) 5728 1264 or email: beechworth.sc@education.vic.gov.au to make a booking.

We welcome new enrolment enquiries for all year levels at any time of the school year.

ACKNOWLEDGEMENT OF COUNTRY

Beechworth Secondary College acknowledges the Australian Aboriginal and Torres Strait Islander peoples of this nation. We acknowledge the traditional custodians of the lands on which our school is located and where we meet and learn. We pay our respects to ancestors and Elders, past, present and emerging. Beechworth Secondary College is committed to honouring Australian Aboriginal and Torres Strait Islander peoples' unique cultural and spiritual relationships to the land, waters and seas and their rich contribution to society.



CHILD SAFE STATEMENT

STATEMENT OF COMMITMENT TO CHILD SAFETY AND CHILD SAFETY PRINCIPLES

Beechworth Secondary College is committed to the safety and wellbeing of all children and young people. This will be the primary focus of our care and decision-making. The school's approach to creating and maintaining a child safe school environment is guided by our school philosophy and values. At Beechworth Secondary College our vision is committed to developing engaged, compassionate and thoughtful global citizens, aspiring to achieve the best they can in everything they do, celebrating diversity and demonstrating integrity. We know that children can struggle to achieve their personal best if they are not safe from abuse.

At Beechworth Secondary College our values of Aspire, Respect and Contribute guide the decisions and behaviours of all members of our school community, including in relation to child safety.

Beechworth Secondary College has zero tolerance for child abuse.

We are committed to providing a child safe environment where children and young people are safe and feel safe, and their voices are heard about decisions that affect their lives. Our child safe policies, procedures, strategies and practices are inclusive of the needs of all children, particularly Aboriginal and Torres Strait Islander children, children from culturally and linguistically diverse backgrounds, children with disabilities, students in out of home care, LGBTQI students, and children who are vulnerable.

Every person involved in Beechworth Secondary College has a responsibility to understand the important and specific role they play individually and collectively to ensure that the wellbeing and safety of all children and young people is at the forefront of all they do and every decision they make.

KEY CONTACTS



Patricia Broom - Principal

patricia.broom@education.vic.gov.au

General enquiries, school tours and enrolments, confidential matters



Luke Wakefield - Assistant Principal

luke.wakefield@education.vic.gov.au

Student supports, enrolments, college operations



Liz Wilkinson - Business Manager

elizabeth.wilkinson@education.vic.gov.au

Finance, fees, payments and supports



Leanne Clarke - Office Manager

leanne.clarke@education.vic.gov.au

Daily administration, communication, bus travel, student medical records and first aid



Rachael Castricum - Teaching and Learning Leader

Senior School Leader

rachael.castricum@education.vic.gov.au



Ash Lawry - Wellbeing and Engagement Leader

ashlea.lawry@education.vic.gov.au

Phone contact: (03) 5728 1264

Email: beechworth.sc@education.vic.gov.au

Address: 85 Balaclava Road, Beechworth, 3747

Postal Address: PO Box 21, Beechworth VIC 3747

School Office hours: 8.15am - 4.30pm





OUR VISION

Beechworth Secondary College is committed to developing engaged, compassionate and thoughtful global citizens aspiring to achieve the best they can in everything they do, celebrating diversity and demonstrating integrity.

Beechworth Secondary College is a welcoming place where all students have the opportunity to achieve their personal best. Students and teachers work collaboratively in an environment of respect, empathy and challenge and aim for continual growth and improvement.

OUR VALUES

Our college values underpin every aspect of our daily work at school. Our values guide our behaviours, support our choices and help us build strong social relationships with each other.

Our college values are embedded within our Positive Behaviour Supports and ARC, our whole school pastoral care program.

ASPIRE - We value hard work and effort. We are committed to learning. We set high expectations for ourselves and others.

RESPECT - We build respectful relationships. We respect ourselves and value diversity. We care for the environment.

CONTRIBUTE - We participate in, and contributing to, the school and wider community. We forger strong connections with our wider community.

Creating positive classrooms



How we demonstrate our values...

ASPIRE

RESPECT

CONTRIBUTE

I will show aspiration by:

I will show respect by:

I will contribute by:

- o being organised by arriving on time and bringing the expected equipment to class
- o meeting deadlines by submitting tasks on time
- o asking for help when I need it
- o trying my best and attempting all tasks
- o maintaining my focus and using my time well
- o having a growth mindset

- o being gracious, courteous and showing gratitude
- o acting safely and looking out for others
- o being mindful of what others need to learn
- o listening to, and hearing others
- o allowing others to learn effectively
- o including others
- o valuing others' differences
- o taking care of my own and other people's belongings

- o participating as fully as possible
- o helping clean up all mess created
- o fairly dividing the labour effort
- o playing my part in maintaining a clean and safe working environment
- o actively contributing to activities
- o encouraging others
- o being helpful to others where possible



OUR VALUES



ASPIRE

WE VALUE HARD WORK AND EFFORT.
WE ARE COMMITTED TO LEARNING.
WE SET HIGH EXPECTATIONS FOR OURSELVES
AND OTHERS.



RESPECT

WE BUILD RESPECTFUL RELATIONSHIPS.
WE RESPECT OURSELVES AND VALUE DIVERSITY.
WE CARE FOR THE ENVIRONMENT.



CONTRIBUTE

WE PARTICIPATE IN, AND CONTRIBUTE TO,
OUR SCHOOL COMMUNITY.
WE FORGE STRONG CONNECTIONS WITH
OUR WIDER COMMUNITY.

ENROLMENT PROCESS

Enrolment enquiries are welcome at any time during the school year for all year levels.

Grade 6/7 government school student application:

Your school will contact you during Term 2 and ask you to complete the form “Application for Year 7 Placement 2024”. When complete, submit this to your primary school by **12th May**.

The primary school will manage a list of all of their Grade 6 students and send the names to the appropriate Secondary College. Confirmation of placement will come after 19th July. We are not permitted to confirm any places prior to this time. Students within the Beechworth Secondary school zone will be offered placement in Year 7 at Beechworth SC (<https://www.findmyschool.vic.gov.au/>). Families requesting entry into the Beechworth SC Montessori Adolescence Program will need to indicate this on the enrolment form in the space provided. Please note that students in our catchment area guaranteed entry to the school but not necessarily to the Montessori Adolescent Program.

Grade 6/7 non-government school student applications:

Student in Grade 6 transitioning from St Joseph’s PS Beechworth and Beechworth Montessori School can access the “Application for Year 7 Placement 2024” from your primary school office. This can be completed and submitted to your primary school.

Students from other non-government schools will need to directly request an enrolment pack from the BSC office and submit it back to the college during the Grade 6 year. The time frame for notification of placement is the same as for government school students as detailed above.

Montessori Adolescent Program applications:

The Montessori Adolescent Program is a fee based program that has limited places. Students can indicate a preference for the program on the college enrolment forms. For further information about the costs and program details, please contact the office.

All other applications:

We recommend you book a tour or a meeting with our principal team prior to enrolling. Enrolment forms for non-grade 6 students can be accessed by contacting our office team.

Return applications to Beechworth Secondary College:

Mail: PO Box 21, Beechworth, 3747

In person: 85 Balaclava Road, Beechworth, 3747

Email: beechworth.sc@education.vic.gov.au

To book a tour of the school or request an enrolment application, please contact the school office on (03) 5728 1264.

Catchment primary schools include:

Beechworth Primary School, St Joseph’s Primary School, Beechworth Montessori School, Wooragee Primary School, Yackandandah Primary School, Middle Indigo Primary School.

ENROLMENT TIMELINE - YEAR 7, 2024

28th March 2023:

Discovery Tours and Open Night - invitation to all interested families and community members to tour our college and experience what our program has to offer.

From 24th April 2023:

Families at government schools will receive the Parent Transition Pack from their primary school which includes the "Application for Year 7 Placement 2024" form. Parent Transition Packs for Beechworth Montessori School and St Josephs PS Beechworth schools will be available to collect from you primary school from 26th April 2023.

12th May 2023:

Families at government schools will return their completed application for Year 7 to their primary school. Families at Beechworth Montessori School and St Josephs PS Beechworth will return their completed application directly to their primary school. Families from other non-government schools return application forms directly to the BSC office.

19th July 2023:

Families at government schools are notified of the outcome of their application by their primary school. Families at non-government schools are notified of their outcome by Beechworth Secondary College.

Early August 2023:

We will send a welcome letter to future Year 7 students.

21st August 2023:

We will send enrolment packs and information about transition days to future Year 7 students

August – September 2023:

Orientation process for future Year 7 families and students commences, including parent welcome evening, initial academic assessment and other events and information.

12th December 2023:

Statewide orientation day for all Year 6 students





UNIFORM

At Beechworth Secondary College, we believe that a uniform promotes a sense of belonging, equality and college pride. The uniform has been designed to take account of comfort, flexibility, ease of care and cost. The basic colours are bottle green, white, black and grey. There are a number of choices within the uniform range that students can make to meet the schools requirements. As determined by School Council, it is expected that full school uniform will be worn by all students. School Council approved uniform items include:

- Skirt - green tartan
- Pants - black or grey tailored pants, plain (not jeans, tights or tracksuit pants)
- Shorts - black tailored shorts (not running or sporting shorts)
- Dress - green/white check
- Polo shirt - green or white with BSC Logo
- Blouse - white cotton, with BSC logo
- Jumpers - green woollen jumper with BSC logo
- Green polar fleece jacket with BSC logo
- Jacket - green and white, lined, spray jacket with BSC Logo
- Socks - grey, black or white socks
- Shoes - black, closed toe, lace up school shoes with strong soles (suitable for safe engagement in kitchens, science laboratories and trade classes)
- Headwear - broad-brimmed hat with BSC logo during Terms 1 and 4 (Sun Smart)
- Beanie – plain and black can be worn during Term 2 and 3
- Sports uniform - polo shirt, black, with BSC logo
- Sports shorts - black, with BSC logo

Families are able to purchase uniform items from Fashion Club Wear

<https://fcw.com.au/online-shop/beechworth-secondary-college/>

Our on-site uniform shop is located in the Music Hub building at the front of the school and is open every Monday during the school year from 1:30pm – 4:30pm.

Information and pricing about uniform items is available from our front office. Second hand uniform items are also available from our uniform shop.

State Schools Relief funding is also available for families requiring further assistance. Please speak to our office staff for more information about acquiring uniform items.

STUDENT LOCKERS AND LOCKS

All students are issued with a locker at the beginning of the school year. Our locker bays are single year level and students are assigned by Home Group. Students in Year 7, and new students, are issued with a combination lock and are expected to use this lock for their time at the college to secure their locker. All students are required to lock their locker to ensure their belongings do not fall out of their locker and their items are safe.



BOOKLISTS AND RESOURCES

In late November of each school year, students are issued with a booklist that describes the texts and resources required for the subsequent school year. Textbooks are ordered by families individually through Champion Education and stationery items can be ordered through Beechworth Newsagent. Students are also required to purchase annual subscriptions to Education Perfect and/or Edrolo for a number of subjects. This is detailed in the booklist. Second hand books are also available through a reseller: www.sustainableschoolshop.com.au Students enrolling at the school part way through will be supported by the Library staff to order books and establish online subscriptions.



BUS TRAVEL

We are currently supported by Beechworth, Hamilton's, and Dyson's Bus Lines, who transport students to Beechworth Secondary College from locations including Yackandandah, Stanley, the Indigo Valley and other local communities. We are also able to offer connecting services from Barnawartha and Allan's Flat. Students looking to travel on the Beechworth Bus services are required to complete a form available from our school office prior to receiving approval to travel. There is no cost for students travelling to Beechworth Secondary College as their closest school from beyond a 4.8km radius of the school. Where students are not travelling to their closest school there may be a fee incurred. Incidental travel is only available via the completion and subsequent approval of an alternate form, also available from our school office.

Times and pick up locations are listed on our college website:

http://www.bworthsc.vic.edu.au/?page_id=683

If you are interested in finding out more information or to apply to travel on any of the six services please get in touch with our school office.

MOBILE PHONE POLICY

In accordance with state government legislation, from Term 1 2020, students who choose to bring mobile phones to school must have them switched off and securely stored during school hours.

For the purpose of this policy, a mobile phone is a telephone with access to a cellular (telecommunication) system, with or without a physical connection to a network.

Exceptions to the policy may be applied if certain conditions are met. Exceptions can be granted by the principal, or by a teacher. Exceptions must be documented.

Where students bring a mobile phone to school, the school provides secure storage at the office or in student lockers.

Please refer to our Mobile Phone policy on our school website for further details.

Non-compliance with our mobile phone policy will be dealt with in accordance with engagement policies.

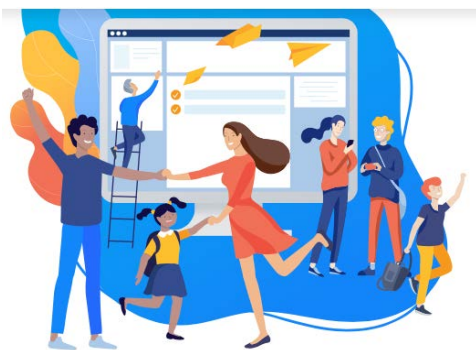
For more information visit:

<https://www2.education.vic.gov.au/pal/students-using-mobile-phones/policy>

COMMUNICATION WITH FAMILIES

We value regular and consistent communication with our students and families.

The college keeps families up to date with notices, events, celebrations and opportunities through our fortnightly newsletter, and Compass Newsfeed.



We encourage all parents and caregivers to download the Compass App (available for Android and IOS devices) to easily receive regular updates. Alternatively Compass can be accessed from a web browser using your personal account details.

Teachers often communicate with families via email or phone call, so it is important that all family contact information is accurate and up to date. Please contact the office if you need to update personal details.

OUR 2023 STUDENT LEADERS

“Leadership is not a position or a title it is action and example” - Donald McGannon

Student leaders at Beechworth Secondary College are ambassadors and role models who embody our school values and expectations. They provide an important student voice with unique perspectives on learning, teaching and school life. Student insights are invaluable to the college leadership and help ensure that student issues are heard and addressed.

At Beechworth Secondary College, students at all year levels can nominate for leadership roles. An in depth process of selection occurs for leadership roles, including an interview with the principal, a speech to the student body and student and teacher preference voting (School Captain roles only).

Our House Captains play an important role in helping to build school spirit and pride and encouraging others to participate in school events. Our House Captains, with support from the Year 12 students, run weekly lunch time activities, including the very popular indoor soccer club,

School Captains - Lexi Bussell and Cooper Waller

School Vice-Captains - Chloe Sacco and Luke Mcauliffe

2023 SCHOOL CAPTAINS



Chloe Sacco

Cooper Waller

Lexi Bussell

Luke Mcauliffe

STUDENT COUNCILLORS



Hunter Bogg



Isabelle Noble

Hunter Bogg (Year 12) and Isabelle Noble (Year 11) have been elected by the student body to represent them on School Council in 2023. Hunter and Isabelle will contribute views, ideas and perspectives to the School Council group that best represents the needs of the student community.

2023 HOUSE CAPTAINS



Kane Scott - Hotham House Captain



Jaimie O'Riley - Buffalo House Captain



Lily Webster - Bogong House Captain



2023 YEAR LEVEL CAPTAINS AND SRC

Year 12 Captains and SRC Representatives

Cooper Waller, Lexi Bussell, Chloe Sacco, Luke Mcauliffe, Jaimie O'Riley, Lily Webster, Kane Scott

Year 11 Captains and SRC Representatives

Samara Bright, Quinn Bussell, Hunter North, Clancy Ellett

Year 10 Captains and SRC Representatives

Lachie Villani, Jarrah Eaton, Jett Gorka, Elijah Leeds, Maeve Jones, Abby Tidball /Taya Waller, Mia Klimpsch

Year 9 Captains and SRC Representatives

Emma Timmins, Josh Adkins

Year 8 Captains and SRC Representatives

Eva Doyle, Charles Wallen, Alistair Merritt

Year 7 Captains and SRC Representatives

Jordi Williams, Oliver Paul, Hazel Woodford, Tyson Coad

MAP Captains and SRC Representatives

Vaughan Bussell/Lilly Dodds, Dorian Ellis



2023 MINI SCHOOL LEADERS



Alex O'Connor, Taylor Dowling and Michael Bocse Year 7, 8 & 9 Middle School Leaders



Rachael Castricum, Storme Bishop and Chris White Year 10, 11 & 12 Senior School Leaders



Lauren Barnard - Montessori Adolescent Program Leader

Our mini school leaders support all students, along with the core instructional team of teachers, to provide consistent care and connection to the school.

Teachers use consistent strategies that encourage high expectations, positive behaviour and readiness to learn in all students.

Mini school leaders support students, families and teachers with Individual Learning Plans, Behaviour Support Plans, Student Support Group Meetings, implementation of Positive Behaviour Supports and our college values.

LEARNING SUPPORT AND INCLUSION

Learning support is in place across the college to ensure that every student achieves success with their education and experiences an inclusive school environment.

- Learning Support Staff attend classes and are available during breaks to support with social learning and navigating breaks.
- Staff are trained in literacy and numeracy intervention practices, providing additional support through timetabled small group or individual intervention sessions.
- Regular Student Support Group meetings (SSG) are held for students in need of assistance to ensure parents and teachers are kept informed of the individual requirements.
- Our Learning Support Coordinator works closely with the primary schools to ensure a supported transition is in place.



HIGH ABILITY OPPORTUNITIES

The Victorian Challenge and Enrichment Series provides extension and enrichment activities across the curriculum to engage, challenge and extend high-ability students. Each year BSC nominates students to participate in activities within the series according to their abilities and interests.

The Victorian High-Ability program gives Department nominated high ability students the opportunity to participate in 10-week online enrichment programs, in English and mathematics through Virtual School Victoria. After completing the virtual program, students participate in a face-to-face masterclass with other high-ability students from schools in their local area.

Priority of place is provided to students who are high ability and experience social-economic disadvantage, identify as Aboriginal and Torres Strait Islander people or reside in a regional/rural area.

In senior years, high ability students have the option of accelerating in VCE subjects at Year 10 as well as completing Higher Education Studies at Year 12 through CHES.

For more information about High Ability Learning at Beechworth Secondary College, please contact Patricia Broom.



WELLBEING

Programs:

- Weekly breakfast club
- SAFE Schools and Umbrella Academy
- Individual wellbeing appointments
- Headspace onsite appointments
- Whole school wellbeing awareness activities

We have an holistic approach to student wellbeing at the college, with our values of Aspire, Respect and Contribute central to our program. These core school values guide our work as we aim to be our best selves in a supportive, compassionate and stimulating educational environment. Our approach to Student Wellbeing and Engagement is multi-layered and includes classroom based and school wide programs (ARC) and services. Students in all year levels are supported by a Home Group teacher, on a daily basis, who is also a core instructional teacher. The Home Group teacher is the main contact person for the family to build relationships with our school, supported by the Mini School Leaders.

The Assistant Principal has overall responsibility for Student Wellbeing and Engagement and leads the School-wide Positive Behaviour Support program that includes school policies relating to anti-bullying initiatives and positive mental health.



Ash Lawry - Wellbeing and



Sarah Williams - School Nurse



Amy Tobin - Mental Health Practitioner



21 ST CENTURY LEARNING



We believe technology has an important place in education and have developed our infrastructure to support teachers and learners to access technologies in the classroom.

- New state of the art ICT classroom (S1)
- Bring Your Own Device (BYOD) laptop program (compnow.com.au) with full wifi network access, ICT support through our Library Services, access to G Suite, Adobe, Office 365 and the full Edustar suite of software through @schools
- Full printing access through the photocopiers/printers



Compass Learning Management System provides families with access to information about their child's learning, attendance, reports, email access to teachers, events and a newsfeed.

- Parents and students can log in from anywhere with internet access and email teachers, access learning resources and coursework, check attendance and access school email and notices.
- Through COMPASS, continuous online feedback and communication is in place for parents and students to access. Parents can review student learning progress, access comments on work submitted, check attendance and if due work is up to date. Event consent and fee payments can also be made via Compass.



Cisco Webex Meetings is available to all students and teachers so that video conferencing options are available at any time.



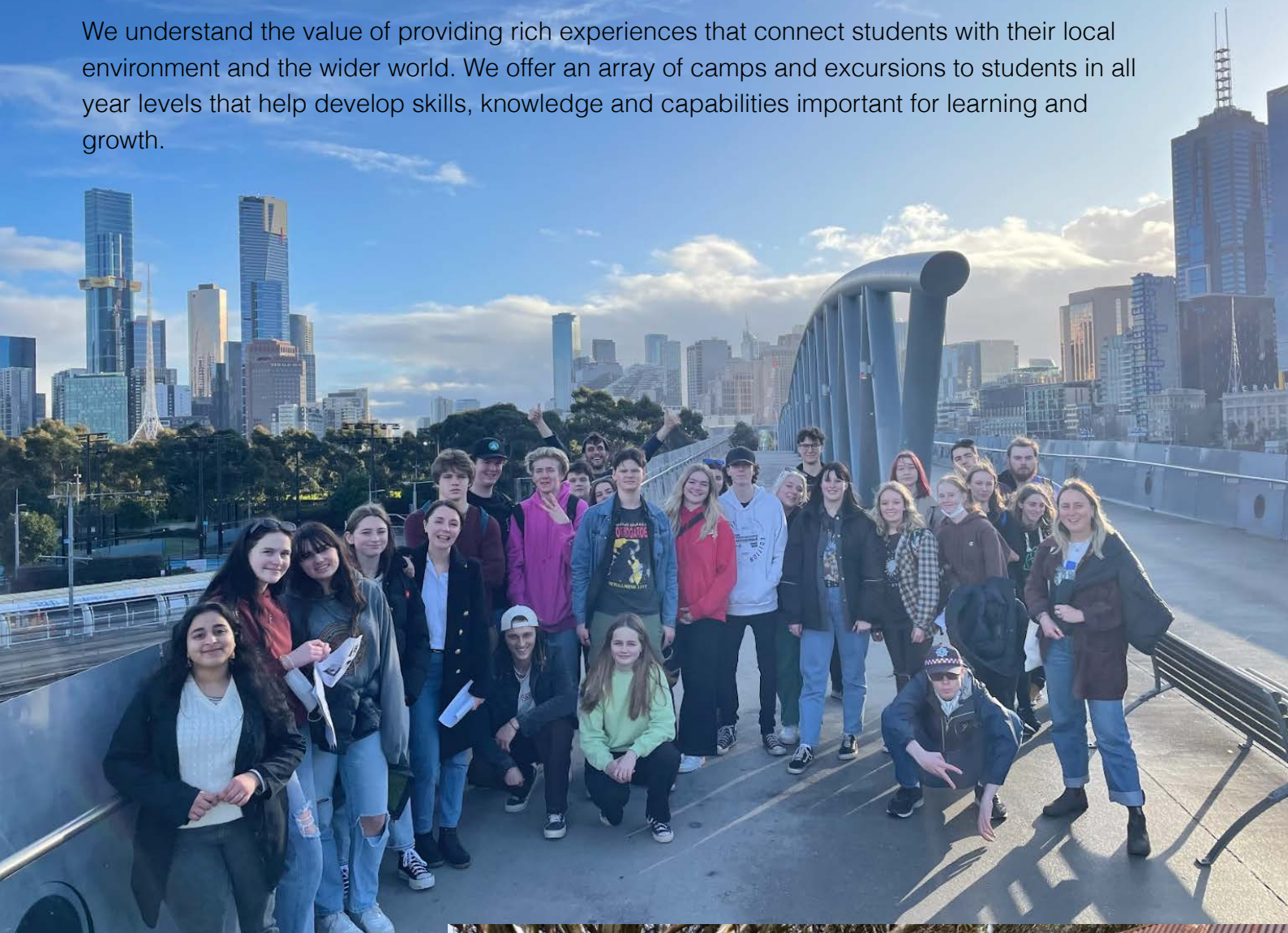
LIBRARY

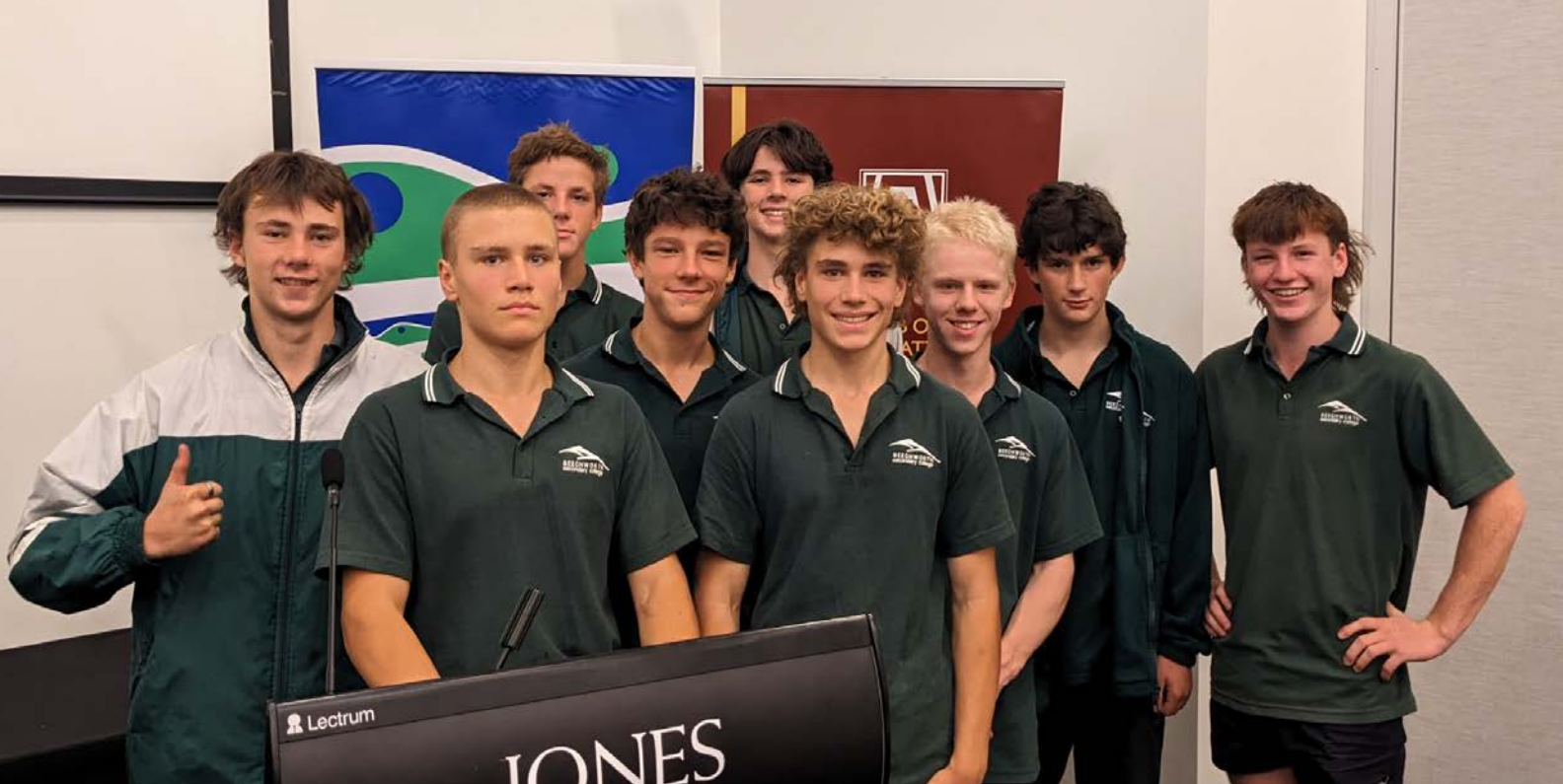
Our school library is a quiet, comfortable and friendly place, a hub of resources and support for students.

- We love books and sharing knowledge in the library resource space and encourage our students to experience the same.
- Staffed by full time librarians.
- Students have a say in the books that we order, along with purchases of high interest material to inspire even the most reluctant reader.
- Magazines are purchased to suit the interests of students; including Mountain Biking, Fishing, Cooking and Fashion.
- Students participate in the Premier's Reading Challenge each year.
- We have a range of games, cards, jigsaws and Lego that the students can use at recess and lunchtimes. Cricket sets, soccer and basketballs are all loaned from the library.
- Our IT services operate from the library and we can help students troubleshoot any school laptop problems and change forgotten passwords.

CAMPS AND EXCURSIONS

We understand the value of providing rich experiences that connect students with their local environment and the wider world. We offer an array of camps and excursions to students in all year levels that help develop skills, knowledge and capabilities important for learning and growth.





COMMUNITY CONNECTIONS

The college frequently connects with the local and broader community and emphasises the importance of contribution and participation. Students are able to seek out opportunities linked to personal passions and pathways.

Through community connections, students develop leadership and organisational skills by representing their actions and voices to the wider community.



LEARNING AREAS



At Beechworth Secondary College we run a wide variety of programs for students that link with the Victorian Curriculum 7-10 and extend to senior offerings that include VCE, VCAL and VET options. In 2023 this will be the Victorian Pathways Certificate and VCE Vocational Major as part of the Senior School reforms.

Year 7 - 10 Learning Areas

English

Humanities

History, Geography, Civics and Citizenship, Business and Commerce

Mathematics

Science

Languages - French

Health and Physical Education

The Arts

Visual Arts, Visual Communication Design, Drama, Music

Technologies

Materials Technology, Digital Technology, Food Technology

Careers and Pathways

ARC



ASSESSMENT AND REPORTING

We strive to provide a rich and engaging learning environment that supports young learners as they continue to build on the great skills developed in primary school. Teachers use a range of diagnostic assessments early in the school year to assist in determining the explicit learning needs of each student

Assessment and Reporting:

- Progress reports - once per term.
- End of semester reports - June and December.
- Twice yearly Learner Conferences (student, parent, teacher interviews).

Progress Reports are completed each term, with students being assessed against the school values of Aspire, Respect and Contribute and the behaviours in the college-wide expectations matrix. At the end of each semester, a more detailed report is provided which includes students achievement against the Victorian Curriculum standards. All reports are accessed through Compass and can be downloaded and saved or printed.

TIMETABLE

4 periods per day, 75 minute periods

The Year 7 and 8 curriculum consists of core subjects, plus a rotation of specialist subjects that reflect the requirements of the Victorian Curriculum.

The core subjects are English, Maths, Science, Humanities, Health and Physical Education, and French with a rotation through The Arts (Performance and Visual), and Technologies (Design & Technologies and Digital Technologies). The ARC program runs across year levels for one session each week, offering students an opportunity to develop social and personal capabilities.

Mon 6	Tue 7	Wed 8	Thu 9	Fri 10
				Mungo Man Poster
9:00: HG - 7HG1 - S2 - AO	9:00: HG - 7HG1 - S2 - AO	9:00: HG - 7HG1 - S2 - AO	9:00: HG - 7HG1 - S2 - AO	9:00: HG - 7HG1 - S2 - AO
9:15: 1 - 7ENG1 - S2 - SMC	9:15: 1 - 7PE1 - GYM - AK	9:15: 1 - 7HUM1 - 16 - SB	9:15: 1 - 7DTW1 - A6 - MH	9:15: 1 - 7HUM1 - 16 - SB
11:00: 2 - 7PE1 - GYM - AK	11:00: 2 - 7FRE1 - P4 - SM	11:00: 2 - 7ENG1 - S2 - SMC	11:00: 2 - 7MAT1 - S4 - MB	11:00: 2 - 7H1 - 16 - AK
12:20: 3 - 7MUS1 - MUSIC - AO	12:20: 3 - 7SCI1 - S6 - IJ	12:20: 3 - 7ARC1 - S2 - JM	12:20: 3 - 7ENG1 - S2 - SMC	12:20: 3 - 7MAT1 - S4 - MB
2:11: 4 - 7FRE1 - P4 - SM	2:11: 4 - 7MAT1 - S4 - MB	2:11: 4 - 7MUS1 - MUSIC - AO	2:11: 4 - 7SCI1 - S6 - IJ	2:11: 4 - 7DTW1 - A6 - MH

Students access their timetable on Compass and are able to see specialist activities such as instrumental music, excursions and additional programs, as well as assessment due dates and change of classroom details.



ENGLISH

English: 3 periods per week

Our college is committed to working with all students to develop their literacy and English skills, so that they can communicate more effectively in all aspects of their lives. Our school wide focus is on improving students' writing and we tackle this in English classes as well as in the wider curriculum. We believe all students can learn and grow, and it is our job to help them develop and improve these skills. We use a range of strategies to improve writing stamina, writing structure and vocabulary. You can support your child in their writing development by asking to read what they are writing at school in any of their classes; having conversations about their writing, including what they find tricky; and by encouraging and supporting them to read as much, and as often, as possible.

HUMANITIES

Humanities: 2 periods per week

Humanities is the study of how humans interact with one another and with the natural world. Humanities at Beechworth Secondary College explores the four disciplines of Business and Economics, Civics and Citizenship, Geography and History. Each discipline is broken into two units per year and reflects the requirements of the Victorian Humanities curriculum. Each discipline emphasises the importance of learning and practising the skills students need to become independent, life long learners and links to pathways studies at VCE and VET level. Our current senior school offerings for the Humanities include: VCE Business Management, VCE Accounting, VCE Geography, VCE History and VCE Legal Studies.

Humanities offers a rich and diverse curriculum. Students learn vital skills and are exposed to a wide range of content, facts and information. In Years 7-10, students have two Humanities lessons per week. At VCE this increases to three lessons per week. Learning experiences in Humanities are planned carefully and collaboratively so that lessons are accessible to all. There are many opportunities for discussions, group work, interactive learning, role plays, field work, excursions, investigation, personal reflection, empathy, research and enquiry which means this is a subject that learners of all abilities enjoy.



MATHEMATICS

Mathematics: 3 periods per week

Developing strong numeracy skills in Mathematics is critical for all our students and our mathematics teachers use a range of strategies to engage students no matter their point of need. Our teachers and students use online programs such as Essential Assessment for pre and post testing of skills and knowledge as well as Education Perfect for class based instruction and practical learning activities.

Our teachers make links to real world applications of mathematics and connections to other subject areas and provide students with opportunities to participate in national mathematics competitions and challenges.

Lunch time maths support sessions are also available each week.

We offer a full range of mathematics subjects at senior level, including VCE Mathematical Methods, VCE General Mathematics, VCE Further Mathematics, and VCAL Numeracy or VCE Foundation Mathematics (cohort dependent). VCE Specialist Mathematics is supported for interested students.

Beechworth Secondary College is a front runner with the use of tertiary level mathematics software. All students in senior mathematics use Wolfram Mathematica to complete VCE coursework.

Wolfram *Mathematica*[®]





SCIENCE

Science: 2 periods per week

The sciences support our students to regularly engage in analytical and scientific thinking and problem solving. Our college now has three new, state of the art, science laboratories that all students from Year 7 - 12 access for science lessons.

Our Science program focuses on helping students to develop skills in both the applied and theoretical components of the study. Year 7 - 10 Science explores Earth and space sciences, Biological sciences, Chemical sciences and Physical sciences. Through these areas of investigation, students are able to build their science inquiry skills and understand how sciences contribute to the development and understanding of our world.

Our students regularly access outreach science centres and programs in an effort to link classroom instruction to real world scientific work. At senior school, we offer the full range of VCE Science subjects, including VCE Chemistry, VCE Biology, VCE Physics, VCE Psychology, VCE Environmental Sciences and VCE Agriculture and Horticulture.

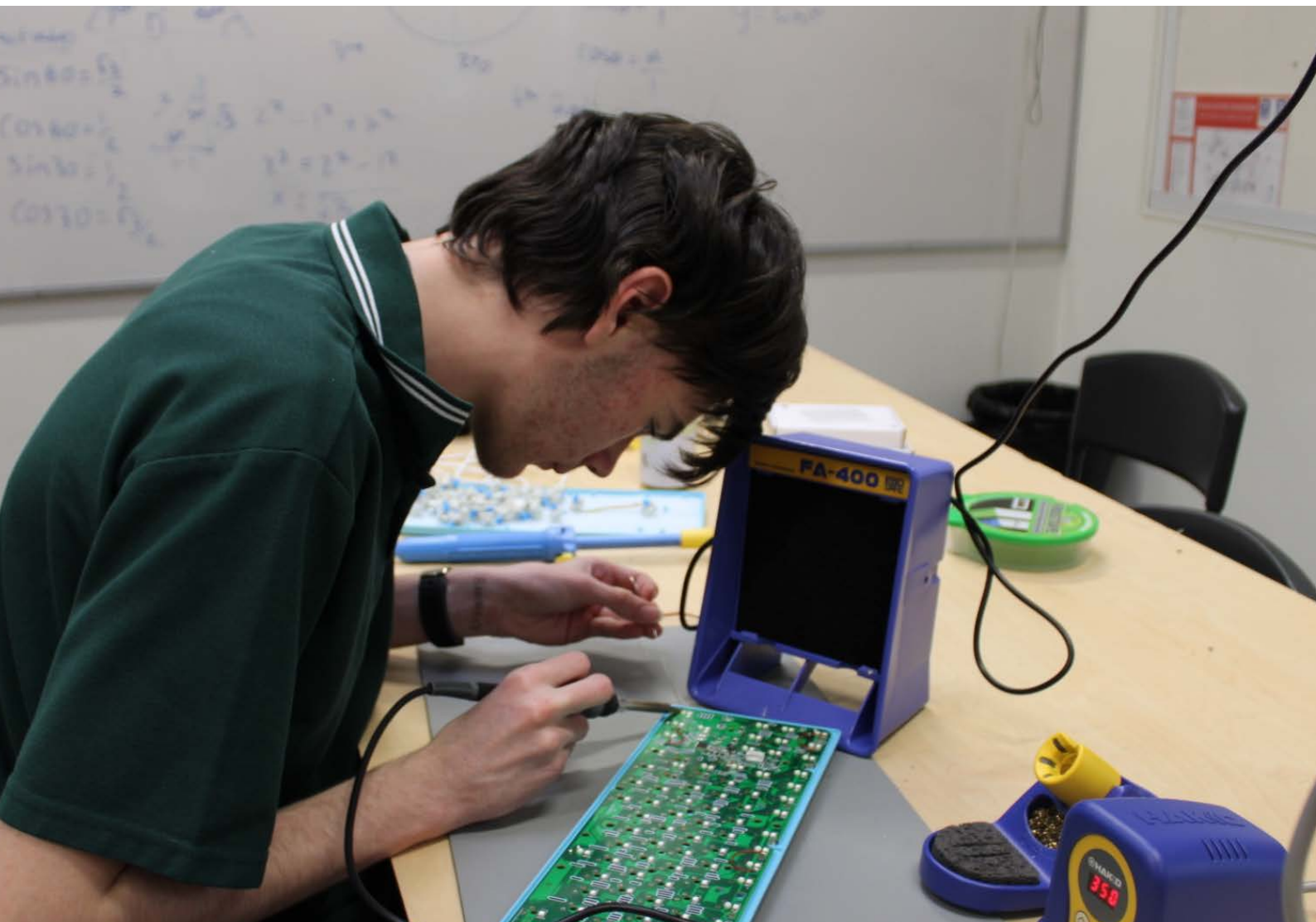
STEM

Our college has invested heavily in STEM robotics and emerging technologies. Technology resource investments include a class set of VEX Robotics, Virtual Reality hardware and software, 3D printing and modelling hardware and software, laser cutter and CNC router.

This equipment is accessed within the normal technologies and engineering curriculum and also during lunchtime clubs. Students learn the basics of coding robots in Year 7 by using Scratch and other block based coding languages.

- Year 8 students have the opportunity to join the VEX robotics elective and use the VEX IQ kits (Lego mind-storms alternative)
- Year 9 students can also select an elective to access VEX EDR
- Students are able to be involved in the local VEX scrimmages and national championships.

STEM skills are developed in Year 7 Digital Technologies, Year 8 Materials Technologies, Year 9/10 3D Art and Design, Year 9/10 STEM, Year 9/10 Engineering and Year 9/10 Digital Technologies. Senior school pathways include VCE Systems Technologies, VCE Applied Computing and VET Engineering.



HEALTH AND PHYSICAL EDUCATION

Health: 1 period per week

Physical Education: 2 periods per week

Health and Physical Education is a compulsory subject for all students from Year 7-10, with pathways through to VCE Unit 1-4 Physical Education and Health and Human Development.

Students are required to change into compulsory school PE uniform for each practical class, including a SunSmart hat and drink bottle in Terms 1 and 4. In lessons, students explore movement patterns and skills and apply them to a wide range of sports and physical activity concepts.

There is a compulsory theory and practical component to the subject these include: Components of fitness, body systems, individualised training programs and peer coaching.

Health curriculum themes include Dimensions of Health, Respectful Relationships, Personal Health & Wellbeing, and Community Health. In 2023, students will have access to our newly refurbished gymnasium. They currently access a quality external basketball court, multi-purpose court and extensive grounds, playing fields and community facilities.





OUTDOOR EDUCATION

Outdoor Education is an elective for students in Year 9/10 and VCE, with a range of experiences alternating over a two year program.

This very popular elective takes our students on experiences of a lifetime. Mountain Biking, Hiking, Kayaking, Indoor Rock Climbing, Abseiling and Sailing are all opportunities on offer to the adventurous teams that set forth. Our location is ideal for this subject and VCE pathways include VCE Outdoor Education and VCE Environmental Science



THE ARTS AND TECHNOLOGIES

The Arts: 2 periods per week

Technology: 2 periods per week

We have a thriving Arts and Technologies department where students are able to engage with a team of passionate, industry experienced teachers to explore their creativity and problem solving skills.

In Year 7 and 8, students rotate through visual and performing arts disciplines as well as Design and Technologies and Digital Technologies. In Year 9 and 10, students are given the option of choosing from of a range of specialised electives.

Year 7 - one semester of each: Visual Art, Wood Technology, Music, Digital Technology

Year 8 - one semester of each: Visual Communication, Food Technology, Media, Materials Technology

Year 9/10 Elective options include: Visual Arts, Visual Communication, Inquiry by Design, 3D Art and Design, Digital Technologies, STEM, Woodwork, Engineering, Food Technology, Outdoor Education, Music, Creative Enterprise and Media.

There are a variety of senior pathways options in the Arts and Technologies for students wishing to pursue creative or design fields. Our current senior school offerings include VCE Art: Creative Practice, VCE Visual Communication Design, VCE VET Music Industry Studies, VCE Systems Engineering, VCE Food Studies, VET Engineering, VET Furniture Making Pathways. Additional VET and VCE subjects are offered at local TAFE providers and Virtual School Victoria.





CLASSROOM MUSIC

In classroom music, students learn the fundamentals of how music is constructed through performing, analysis of recorded music, and composition. Students use their developing knowledge to create their own music by composing and improvising musical ideas, and they perform music as both soloists and as part of a group.

Music is a compulsory subject in Years 7 & 8. Students develop their knowledge of rhythm through learning basic music notation and playing percussion, and are introduced to the basic playing skills of a contemporary popular instrument of their choice.

Music becomes an elective subject at Years 9 & 10. Students create their own compositions in an electronic music style using modern recording and sequencing software. They analyse recorded music to further enhance their knowledge of compositional devices, and they use basic music theory principles to improvise and develop ideas. Students also form groups to learn, rehearse and perform simple repertoire on an instrument of their choice.



INSTRUMENTAL MUSIC

Students can choose to learn to play a specific instrument in lessons with one of our Instrumental Music tutors. We offer lessons on guitar, piano, bass guitar, drums, and vocals. Students learn in small groups to develop their playing skills and, as they progress in their proficiency, have the option to join an ensemble or performance group. Fees apply to participate in this program. For more information, contact Alex O'connor.



LANGUAGES - FRENCH

French: 2 periods per week

We are passionate about providing quality additional language instruction at Beechworth Secondary College and we are proud of our work with our key feeder primary schools to provide consistent language offerings to assist with the transition to secondary school.

We currently offer French language education to students in Year 7 - 10 and as part of the Montessori Adolescent Program. Students with particular additional language skills or native language background may access alternative languages via the VSL - Victorian School of Languages.

By studying a language other than English, students more deeply develop skills in the four areas of speaking, listening, reading and writing as well as develop their knowledge of a different culture, broadening cultural and social perspectives.

- Studying a language in VCE gives additional points to student ATAR.
- VCE students who achieve the required grades in English, Maths and a language receive a Victorian Baccalaureate.
- Students are supported to continue with additional language studies at VCE level.



MONTESSORI ADOLESCENT PROGRAM

If you are interested in this program for 2023 or 2024, please contact the college principal, Patricia Broom. Places in this program are limited.

Students at Beechworth Secondary College may apply to join the Montessori Adolescent Program (MAP). MAP takes place in a carefully prepared environment that allows opportunities for adolescents to gain self-knowledge and belong to a community while empowering them with academic and social competence and a vision for their own future.

The Montessori Adolescent Program (MAP)

- An optional secondary education for Year 7- 9 alongside the mainstream program at the College.
- Combined class of 7, 8 & 9 students who generally stay together for 3 years. (There is an option for MAP students to transition to the mainstream program at any year level if requested).
- Specialist trained MAP teachers and assistant.
- As the program is optional, additional fees for the Montessori Adolescent Program apply. Fees cover the costs of additional staff support, resources and activities (see MAP fee policy).
- MAP has a strong environmental and sustainability ethos and students regularly escape to the great outdoors as their classroom.
- MAP students participate in all school events, sports, year level camps and the mainstream Arts/Technology elective program.

MAP education emphasises experiential learning that connects the head and the hands, with strong links to life experiences and real world problem solving.

The current syllabus includes Self Expression (creative and physical), Maths, Language Arts (English and a foreign language), Occupations (Science and Humanities), and Micro-Economy. The areas of study integrate, echoing the way real-life is an amalgamation of disciplines.



THE MONTESSORI APPROACH

The Montessori National Curriculum syllabus is an integrated three-year curriculum consisting of three domains that are closely interwoven across the curriculum. Social organisation runs parallel with the syllabus and gives context to much of the interactions of the community.

Intellectual Development

This domain is made up of subjects that students need in order to make a contribution to society and has a cross-curricular orientation. The subjects studied are:

- Civility, citizenship, civics and community life (civil society and moral development)
- Mathematics, including arithmetic, geometry, algebra and measurement
- Language Arts, English language, as well as at least one Language (French)

English (Language Arts) and Mathematics are also embedded across all areas of the curriculum, wherever language and mathematical skills are required. Explicit, contextual instruction takes place in these areas as well. For example in Micro-Economy business plans, email communications, profit and loss statements and persuasive language techniques (for advertising) are covered.

This area of study includes opportunities for students to participate in, and contribute to, their immediate community. Through this participation students develop a social conscience and a sense of social responsibility, as well as experience opportunities to develop independence, leadership skills and skills related to making ethical and wise choices.

Health & Physical Expression

In Physical Expression students have opportunities to develop skills in team work, game play, fine and gross motor skills and prepare for life long wellbeing and physical activity. In Health, students explore adolescent physical and mental health in a safe, supportive and inclusive environment.

Creative Expression

The Creative Expression curriculum is offered in partnership with the mainstream program. At BSC we offer visual and performing arts, music, technologies, media and enterprise, guided by specialist teachers. They are also given opportunities to apply these skills in other areas of the curriculum.

3. Preparation for Adult Life

This area of the curriculum includes the Humanities, Occupations and work in the Micro-Economy. Science curriculum covers the study of the earth and living things as well as of human progress and civilisation. The key lessons are linked to the work being done by the community in the Occupations subject area. It includes biological sciences, physical sciences as well as earth and space sciences. Humanities involves the study of History, Geography and incorporates the study of humanity and the building of human civilisations. It also covers diverse areas of anthropology, politics, human rights and environmental studies.



CURRICULUM ALIGNMENT

The MAP Year 7 - 9 curriculum reflects the Montessori National Curriculum Framework (ACARA) and meets the requirements of the Victorian Curriculum, aligning with English, Maths, Science, Humanities, Health and Physical Education, and language with a rotation through The Arts (Performance and Visual), and Technologies (Design & Technologies and Digital Technologies).

Montessori National Curriculum	Victorian Curriculum
Language Arts	English
Mathematics	Mathematics
Occupations	Science and Humanities
Micro Economy	Business and Economics (Humanities)
Independent work	Personal Capabilities Critical and Creative Thinking
ARC/Community Meeting	Civics and Citizenship & Capabilities
Physical Expression	Health and Physical Education
Creative Expression	The Arts/Design and Technologies
Languages - French	Languages - French

NOTE: As a Victorian Government school, our college is required to deliver the Victorian Curriculum to all our students. The Montessori curriculum has been carefully mapped to align with this requirement.

SAMPLE MAP TIMETABLE

4 periods per day, 75 minute periods (2023)

Language Arts	3 sessions per week
Mathematics	3 sessions per week
Occupations	3 sessions per week
Micro Economy	1 session per week
Independent work	1 session per week
ARC/Community Meeting	2 sessions per week
Physical Expression	3 sessions per week
Creative Expression	2 sessions per week
Languages - French	2 sessions per week

9:00: HG - HGMAP - MAP -	9:00: HG - HGMAP - MAP -	9:00: HG - HGMAP - MAP -	9:00: HG - HGMAP - MAP -	9:00: HG - HGMAP - MAP -
9:09: 1 - CMMAP - MAP - LB	9:09: 1 - OCMAP - MAP - SL	9:09: 1 - OCMAP - MAP - SL	9:09: 1 - 7MUSB - MUSIC - AO	9:09: 1 - OCMAP - MAP - SL
10:51: 2 - LAMAP - MAP - ASC	10:51: 2 - MAMAP - MAP - LB	10:51: 2 - 78FRMAP - MAP - EM	10:51: 2 - LAMAP - MAP - ASC	10:51: 2 - MEMAP - MAP - LB
12:08: 3 - MAMAP - MAP - LB	12:08: 3 - ARCMAP - MAP - LB	12:08: 3 - HPEP - GYM - LW	12:08: 3 - IWMAP - LB	12:08: 3 - HPEP - GYM - LW
2:18: 4 - 78FRMAP - MAP - EM	2:18: 4 - 7MUSB - MUSIC - AO	2:18: 4 - MAMAP - MAP - LB	2:18: 4 - HPEH - MAP - LW	2:18: 4 - LAMAP - MAP - ASC





Assessment and Reporting:

In MAP, student development is assessed in an ongoing way.

- Progress reports - once per term.
- End of semester reports - June and December.
- Twice yearly Learner Conferences (student, parent, teacher interviews).

Progress Reports are completed each term, with students being assessed against Dimensions of Observable Growth and the behaviours in the college-wide expectations matrix. At the end of each semester, a more detailed report is provided which includes students achievement in reference to the Victorian Curriculum standards. All reports are accessed through Compass and can be downloaded and saved or printed.

Students also participate in whole school (PAT testing) and National Assessments (NAPLAN).

“The secret of good teaching is to regard the child’s intelligence as a fertile field in which seeds may be sown, to grow under the heat of flaming imagination. Our aim therefore is not merely to make the child understand, and still less to force him to memorise, but so to touch his imagination as to enthuse him to his inmost core.”

~Dr. Maria Montessori

CAREERS AND PATHWAYS

Career education at Beechworth Secondary College starts at Year 7 and the program is carefully planned to ensure students engage in a range of diverse learning experiences throughout their secondary schooling. Students have the opportunity to explore their individual educational pathways, access skills training and experience workplace settings. Our aim is to help students make informed decisions about courses and careers, see the connection between school and future careers and give them skills and knowledge to effectively navigate their career journey. A key feature of our careers program is a full work experience program at Year 10, and a work placement and school based apprenticeship program for students to access in senior school.

Our careers and pathways curriculum is currently delivered through our pastoral care ARC program for Year 7-10 and in Health and Careers for Year 11 and 12 students.

The careers curriculum reflects the VCAA Careers education, skills and attributes framework and is supported by the Beechworth Secondary College careers website:

<https://www.beechworthsecondarycareers.com>

Know yourself

- Be self aware
- Work well with others
- Be a lifelong learner
- Be adaptable
- Present yourself well

Know your world

- Know what's possible
- Use technology and information effectively
- Understand work
- Explore the labour market
- Experience work

Manage your future

- Find and use opportunities to learn and explore
- Make informed decisions
- Plan and build your career
- Balance work and life
- Embrace change



VCE/VM/VET IN 2023

Beechworth Secondary College offers a full senior program that includes VCE (Victorian Certificate of Education), VCE Vocational Major and VET certificates (Vocational Education and Training).

The Senior School is managed by Student Engagement and Learning Leaders, Pathways Leader. Senior school features small class sizes, dedicated senior study spaces and access to online study programs, tutoring and workshops. Subjects are determined each year based on student interests and pathways and VSV, TAFE and Higher Education study options are also available.

The Senior School Team prepare and support students throughout their VCE or VM program to ensure they have a positive transition into further education or employment. Programs are tailored to best support each student in working towards their pathway goals. Students are strongly encouraged to be involved in all aspects of school life and to maintain a healthy balance of school, study, part-time work, sport and leisure activities.



SPORT

Our Sport Program includes:

- School based swimming, athletics and cross country house carnivals
- Ovens and Mitta District sport teams

Beechworth Secondary College is a long standing and successful member of the School Sport Victoria competition. Students may also be involved in sport leadership roles including house captaincy, umpiring, scoring, team and event management.

- All students take part in three house carnivals each year in swimming, cross country and athletics where successful students are then eligible to compete at district, region and then state level.
- The college competes in the Ovens and Mitta District sport group in major carnivals for swimming, cross country and athletics
- Termly inter-school competitions offer Tennis, Volleyball, Water Polo, Cricket, AFL, Soccer, Netball, Badminton, European Handball, Basketball, Table Tennis, Golf, Lawn Bowls and Touch Rugby.
- In our small school, there is a place for everyone on our teams!





OUTDOOR SCHOOL - BOGONG

Our Year 7 Transition start up camp is a fantastic opportunity that is only open to 3 schools in the Alpine district. They start their journey at BSC with a 5 day, subsidised camp at the excellent Department of Education Bogong Outdoor School, near Falls Creek. This program has a distinct focus on developing students awareness and management of themselves and their capacity to make responsible decisions, learning more effectively. The activities challenge and extend students for optimal learning. Activities take place both within the Bogong Village environs and the Bogong High Plains, enabling students to develop a knowledge and understanding of the alpine and sub-alpine environment. The overnight campout component involves students being in a temporary community environment, developing the skills to be living independently. During the week, they will enjoy the beautiful High Plains, great food and dormitory accommodation, rock climbing, canoeing, raft building, and the environmental and sustainability programs and wildlife experiences onsite. These are run by highly trained DET Outdoor Ed teachers. By spending time with the whole Year 7 group, and our school staff, our students move into secondary college is exciting, personally rewarding and supported. This program leads the students into the more extensive Future Makers program run for all Year 9.

Please take the time to review their website: <http://www.outdoorschool.vic.edu.au>

The Year 9 Future Makers Program and the Alpine School is only available to government schools.

OUR BUILDING PROGRAM

The \$9.36 million, second stage of our major works building program is now complete. This is an outstanding facility with Science laboratories, an IT classroom, Library resource centre, staff room, and two general classrooms. It is a learning centre for students from all year levels.

The third and final stage of our building program is designed and ready to begin. This will have our new Drama, Music, Food and Canteen spaces. We look forward to announcing the beginning of this build.

Our outdoor basketball and tennis courts have been completely redeveloped with fencing and synthetic surface applied. It is in frequent use by our students during lessons and in break times.

Our sports area has undercover seating and landscaped surrounds for the comfort of our students and community members.

Gymnasium upgrade works to begin in 2023!

Our gymnasium has been an important asset to our community since its construction in 1995. We have now secured funding for a major upgrade to this resource so that it can continue to be used extensively by the college during the school day and our local community sports groups outside school hours.



ADDITIONAL OPPORTUNITIES

- Student Leadership, SRC, Peer Support, Captaincy
- Access to a range of welfare and healthcare professionals as needed, including an Adolescent Health Nurse, Counsellors and Psychologists, Wellbeing Coordinator, Youth Services
- Cybersmart education, Mental Health Awareness
- Sport: District, Regional and State levels & Swimming, Athletics and Cross Country Carnivals
- Snow Sports Program, Mountain Biking and Outdoor Education
- ANZAC Memorial Service and community connections
- Instrumental Music program
- Lunchtime activity clubs - soccer, chess, games, basketball
- Music Performance Evenings & Whole school productions
- Camps - Year 12 City Camp, Year 9 Future Makers/Alpine School, Year 8 Anglesea Camp, Year 7 Bogong Camp
- Year 12 Celebration Day and Graduation Dinner & Year 10 Formal
- National Competitions: (Science, Mathematics, English, Languages, Media, Art)
- Melbourne University Scholars - Kwong Lee Dow Scholarship opportunity
- Indigenous group - Marrung
- Virtual School Victoria/Victorian Language School - Distance Education
- Emerging Sciences - Sparks Engineering Camp
- Community Art exhibitions, prizes and scholarships
- TAFE Experience Days & Careers Expo - Melbourne
- Tertiary Experience Days - La Trobe Uni, CSU, Wodonga TAFE and GOTAFE
- CHES - Centre for Higher Education Studies (early access to university studies)
- GOTAFE and Wodonga TAFE - Access to external TAFE courses (from year 10)
- VCE Acceleration - from Year 10



Study support opportunities:

- VCE Collaboration Network with Tallangatta Secondary College, Myrteford F-12 College, Bright F-12 College, Mt Beauty Secondary College, Marian College.
- DE funded exam preparation sessions, workshops and tutorials
- Access to free rural tutoring services - RESN
- School based study hub groups

Extension opportunities:

- Engineers Without Borders
- High Ability Program and funded Practice Leader
- Beechworth North East Music Camp
- CEP - Country Education Partnership
- SPARKS Engineering camp
- Cultural Exchange Program
- DET ARC platform - extension program
- Model UN





TRANSITION PROGRAM

Our Transition Program is designed to assist students to orientate themselves within the college and answer any questions they may have about secondary school.

- Grade 6 students are given the opportunity to meet some of their future classmates and develop early friendships that they carry over to the following year.
- We include Year 5 students from our local primary schools to ease transition to secondary school. Students who may need additional support to move on to secondary will be given further opportunities to familiarise themselves with the school and its facilities.
- Transition provides staff with the opportunity to meet and get to know students and identify any educational, social or emotional needs
- Students from the local primary schools visit the college and undertake supported classroom activities and experience real life scenarios for secondary college, such as understanding timetables and using lockers.
- A close connection with the primary schools is maintained and the Year 6 teachers work with our teacher to assist their move.
- During the transition program students will explore the science laboratories, wood technologies workshops, art studios and sports gymnasium.



WE INVITE YOU TO BOOK A TOUR

We welcome all interested families and community visitors to book a tour with our principals to see our school in action. Please contact the office on (03) 5728 1264 or email: beechworth.sc@education.vic.gov.au to book a suitable time.

BEECHWORTH SECONDARY COLLEGE

2024

Discovery Tours

BOOK NOW

Ph: (03) 5728 1264 beechworth.sc@education.vic.gov.au

*Ask us about
our amazing
Year 7 - 12 programs*

ASPIRE

RESPECT

CONTRIBUTE



**BEECHWORTH
SECONDARY COLLEGE**